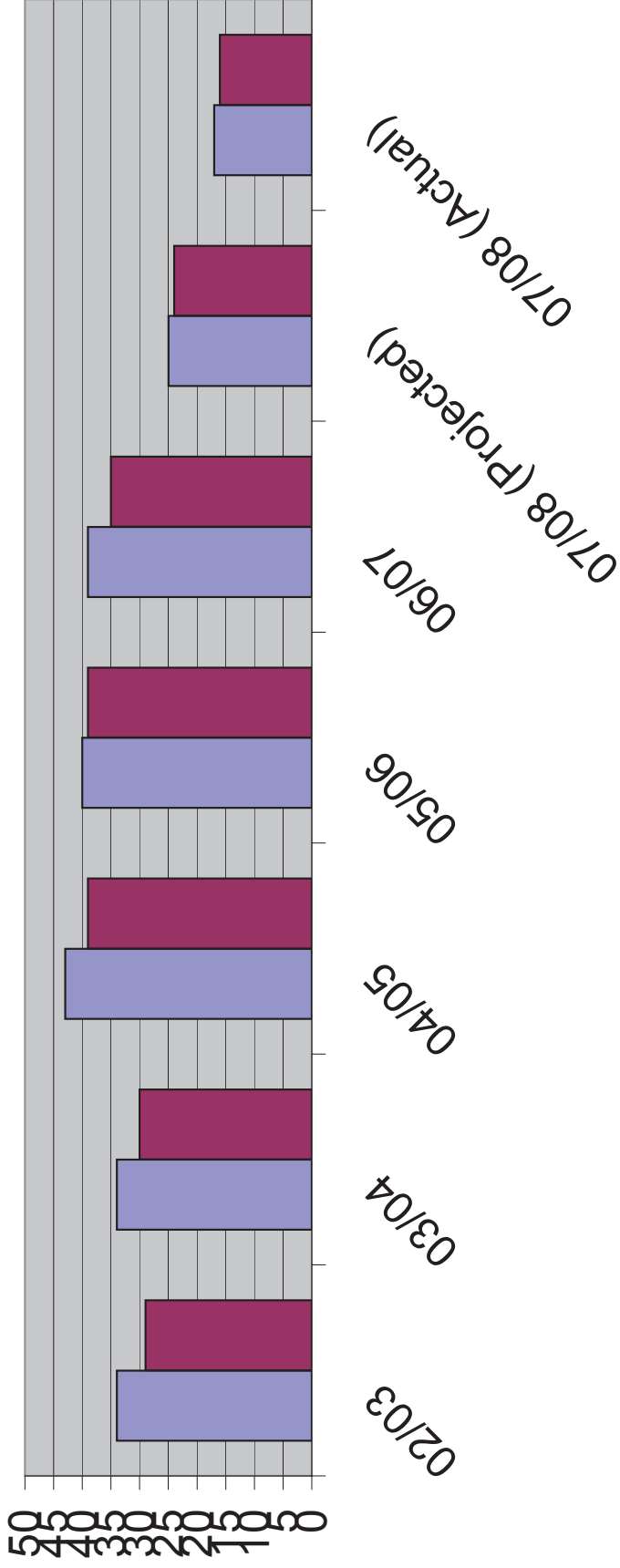


Annexure E

Psychological Claims Numbers (as at Feb 2008)

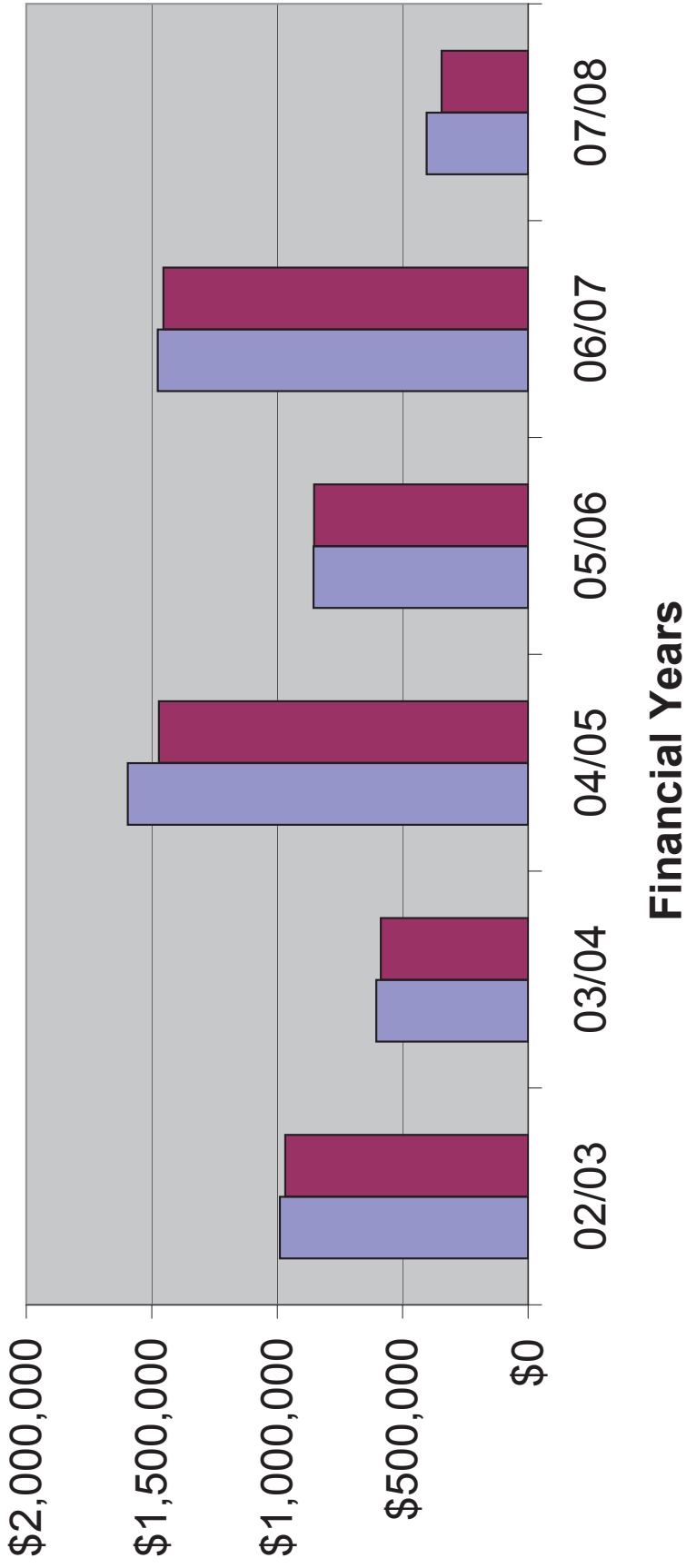
■ All Employees ■ Paramedics



Financial Years

Psychological Claims Costs (as at Feb 2008)

■ All Employees ■ Paramedics



WorkCover TOOCS Coding - Nature of Injury & Mechanism of Incident (as at Feb 2008)

	02/03		03/04		04/05		05/06		06/07		07/08		Totals
	All	Para	All	Para	All	Para	All	Para	All	Para	All	Para	
Post-traumatic Stress Disorder (702)	3	3	1	1	4	4	3	3	0	0	2	2	26
Exposure to a Traumatic Event (81)													
Anxiety/Stress Disorder (703)	1	1	9	9	4	3	5	5	8	8	2	2	57
Exposure to Workplace or Occupational Violence (82)													
Depression (704)	13	12	17	13	22	20	22	20	17	15	6	5	182
Work Pressure (84)													
Anxiety/Depression Combined (705)	0	0	0	0	0	0	0	0	0	0	0	0	0
Suicide or Attempted Suicide (85)													
Short-term Shock - Disturbing Circumstances (706)	15	11	5	5	9	8	6	6	10	9	5	5	94
Other Mental Stress Factors (86)													
Reaction to Stressors - other, multiple or not specified (707)	2	2	2	2	4	4	4	4	4	3	2	2	35
Work-related Harassment and/or Workplace Bullying (87)													
Totals	34	29	34	30	43	39	40	38	39	35	17	16	394

Note: Although there have been no reports of "Suicide or Attempted Suicide" as a TOOCS code (85) for Mechanism of Incident, it is the experience of the Service's Return-to-Work Coordinators that a small number of injured workers do experience suicidal ruminations as a consequence of an injury.

Annexure E2

Year Occurred (Financial)	Policy Name	Claim Status	Date Occurred	Paid Hours to Date	Paid Weeks to Date	Accident Type Group Description	Accident Type Group	Occupation Description	Amount Paid	Reserve Balance	Net Incurred
2006/2007	AMBULANCE - SOUTHERN DIVISION	DECLINED	5/01/2007	0	0	Other Mental Stress Factors	Mental Stress	Ambulance Officers And Paramed	\$ 4,288.35	\$ 216,883.92	\$ 221,172.27
2006/2007	AMBULANCE - NORTHERN DIVISION	ACCEPTED	31/01/2007	22	83	Other Mental Stress Factors	Mental Stress	Ambulance Officers And Paramed	\$ 80,223.95	\$ 222,298.75	\$ 302,522.70
2006/2007	AMBULANCE - NORTHERN DIVISION	ACCEPTED	5/03/2007	22	78	Other Mental Stress Factors	Mental Stress	Ambulance Officers And Paramed	\$ 61,984.78	\$ 96,699.59	\$ 158,684.37
2006/2007	AMBULANCE - SYDNEY DIVISION	ACCEPTED	28/06/2007	0	46	Other Mental Stress Factors	Mental Stress	Ambulance Officers And Paramed	\$ 50,097.08	\$ 118,137.25	\$ 168,234.33
2007/2008	AMBULANCE - NORTHERN DIVISION	ACCEPTED	13/08/2007	26	50	Other Mental Stress Factors	Mental Stress	Ambulance Officers And Paramed	\$ 52,790.86	\$ 148,293.26	\$ 201,084.12
2007/2008	AMBULANCE - NORTHERN DIVISION	P/L ACCPTD	12/10/2007	0	0	Other Mental Stress Factors	Mental Stress	Ambulance Officers And Paramed	\$ 4,243.92	\$ 2,246.08	\$ 6,490.00
2007/2008	AMBULANCE - SOUTHERN DIVISION	P/L ACCPTD	16/02/2008	23	2	Other Mental Stress Factors	Mental Stress	Ambulance Officers And Paramed	\$ 2,958.36	\$ 2,517.00	\$ 5,475.36
2007/2008	AMBULANCE - SYDNEY DIVISION	DECLINED	7/05/2008	20	4	Other Mental Stress Factors	Mental Stress	Ambulance Officers And Paramed	\$ 7,329.85	\$ 7,436.80	\$ 14,766.65
2007/2008	AMBULANCE - NORTHERN DIVISION	ACCEPTED	16/06/2008	33	4	Other Mental Stress Factors	Mental Stress	Ambulance Officers And Paramed	\$ 5,716.30	\$ 4,395.50	\$ 10,111.80
2008/2009	AMBULANCE - SOUTHERN DIVISION	P/L ACCPTD	28/07/2008	0	0	Other Mental Stress Factors	Mental Stress	Ambulance Officers And Paramed	\$ 110.00	\$ 19,984.50	\$ 20,094.50
2006/2007	AMBULANCE - NORTHERN DIVISION	ACCEPTED	1/06/2007	0	6	Suicide or attempted suicide	Mental Stress	Ambulance Officers And Paramed	\$ 7,438.20	\$ 6,743.60	\$ 14,181.80
2007/2008	STATE HEADQUARTERS - AMBULANCE	REAS EXCUS	27/02/2008	0	0	Work Pressure	Mental Stress	Mail Sorting Clerks	\$ -	\$ -	\$ -
2006/2007	AMBULANCE - SOUTHERN DIVISION	RE-OPENED	24/10/2007	0	0	Work Pressure	Mental Stress	Other Specialist Managers	\$ 5,937.69	\$ 168,666.70	\$ 174,604.39
2006/2007	AMBULANCE - NORTHERN DIVISION	P/L ACCPTD	19/03/2007	26	4	Work Pressure	Mental Stress	Ambulance Officers And Paramed	\$ 9,148.74	\$ 2,650.32	\$ 11,799.06
2007/2008	AMBULANCE - NORTHERN DIVISION	ACCEPTED	1/10/2007	30	16	Work Pressure	Mental Stress	Ambulance Officers And Paramed	\$ 37,485.98	\$ 139,632.49	\$ 177,058.47
2006/2007	AMBULANCE - NORTHERN DIVISION	REAS EXCUS	15/06/2007	0	0	Work Pressure	Mental Stress	Ambulance Officers And Paramed	\$ 3,954.50	\$ -	\$ 3,954.50
2007/2008	AMBULANCE - NORTHERN DIVISION	P/L ACCPTD	20/03/2008	0	0	Work Pressure	Mental Stress	Ambulance Officers And Paramed	\$ 4,494.10	\$ 21,280.40	\$ 25,774.50
2006/2007	AMBULANCE - SOUTHERN DIVISION	ACCEPTED	15/03/2008	0	16	Work Pressure	Mental Stress	Ambulance Officers And Paramed	\$ 15,416.90	\$ 25,617.80	\$ 41,034.70
2006/2007	AMBULANCE - NORTHERN DIVISION	ACCEPTED	26/05/2007	11	24	Work Pressure	Mental Stress	Ambulance Officers And Paramed	\$ 29,173.27	\$ 15,458.30	\$ 44,631.57
2007/2008	AMBULANCE - SYDNEY DIVISION	ACCEPTED	28/02/2008	31	19	Work Pressure	Mental Stress	Ambulance Officers And Paramed	\$ 24,491.00	\$ 28,254.29	\$ 52,745.29
2007/2008	AMBULANCE - WESTERN DIVISION	ACCEPTED	28/02/2008	0	16	Work Pressure	Mental Stress	Ambulance Officers And Paramed	\$ 19,599.10	\$ 67,685.40	\$ 87,284.50
2006/2007	AMBULANCE - NORTHERN DIVISION	DECLINED	21/05/2008	0	0	Work Pressure	Mental Stress	Ambulance Officers And Paramed	\$ -	\$ 46,796.20	\$ 46,796.20
2007/2008	AMBULANCE - NORTHERN DIVISION	P/L ACCPTD	4/02/2007	0	0	Work Pressure	Mental Stress	Ambulance Officers And Paramed	\$ 297.60	\$ 1,280.00	\$ 1,577.60
2007/2008	AMBULANCE - SOUTHERN DIVISION	REAS EXCUS	7/05/2008	0	0	Work Pressure	Mental Stress	Ambulance Officers And Paramed	\$ 1,118.92	\$ -	\$ 1,118.92
2007/2008	AMBULANCE - WESTERN DIVISION	P/L ACCPTD	22/06/2008	0	6	Work Pressure	Mental Stress	Ambulance Officers And Paramed	\$ 5,892.38	\$ 13,229.12	\$ 19,121.50
2008/2009	AMBULANCE - WESTERN DIVISION	P/L ACCPTD	2/07/2008	0	0	Work Pressure	Mental Stress	Ambulance Officers And Paramed	\$ 212.85	\$ 3,787.15	\$ 4,000.00
2008/2009	AMBULANCE - SYDNEY DIVISION	P/L ACCPTD	9/07/2008	25	2	Work Pressure	Mental Stress	Ambulance Officers And Paramed	\$ 2,741.78	\$ 17,037.72	\$ 19,779.50
2008/2009	AMBULANCE - SYDNEY DIVISION	P/L ACCPTD	18/07/2008	0	2	Work Pressure	Mental Stress	Ambulance Officers And Paramed	\$ 2,114.40	\$ 17,093.60	\$ 19,208.00
2007/2008	AMBULANCE - WESTERN DIVISION	REAS EXCUS	3/03/2008	0	0	Work Pressure	Mental Stress	Ambulance Officers And Paramed	\$ -	\$ -	\$ -
2008/2009	AMBULANCE - NORTHERN DIVISION	REAS EXCUS	4/08/2008	0	0	Work Pressure	Mental Stress	Ambulance Officers And Paramed	\$ -	\$ -	\$ -
2008/2009	AMBULANCE - NORTHERN DIVISION	P/L ACCPTD	9/08/2008	0	0	Work Pressure	Mental Stress	Ambulance Officers And Paramed	\$ 127.60	\$ 18,221.90	\$ 18,349.50
2007/2008	AMBULANCE - SYDNEY DIVISION	P/L ACCPTD	13/06/2008	11	1	Work Related Harass/Bully	Mental Stress	Ambulance Officers And Paramed	\$ 2,133.01	\$ 2,052.44	\$ 4,185.45
2007/2008	AMBULANCE - WESTERN DIVISION	P/L ACCPTD	16/01/2008	0	0	Work Related Harass/Bully	Mental Stress	Ambulance Officers And Paramed	\$ 633.60	\$ 2,366.40	\$ 3,000.00
2008/2009	AMBULANCE - WESTERN DIVISION	REAS EXCUS	23/07/2008	0	0	Work Related Harass/Bully	Mental Stress	Ambulance Officers And Paramed	\$ -	\$ -	\$ -